

Integration TDM - VERICUT

Data-Interface

TDM successfully supports VERICUT users with the Data and CAD-interface modules for the online transfer of tool parameters and graphics.

The basis: Data-interface

The interface TDM - VERICUT supports your continuous CAM/Simulation process via access to the tool data in your central tool database. The software provides company-specific tool know-how in the phases of the CAM-planning process.

Functions of the data-interface

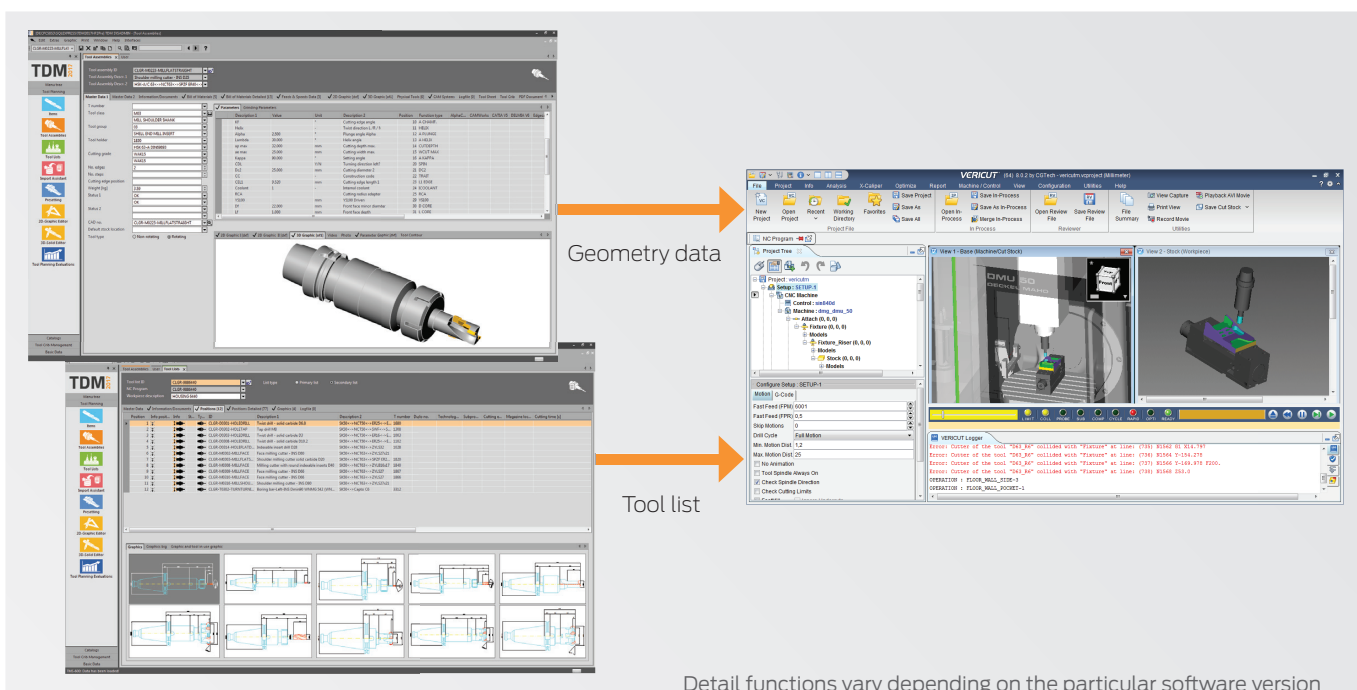
TDM - VERICUT

- Supports NC programmers by providing direct access to the TDM database
- Easy and quick selection to transfer a tool list (tools used in the NC program) from VERICUT via the Search Panel
- Direct access to geometry data and easy import in the Vericut simulation environment

Advantages of the interface

TDM - VERICUT

- Time savings through fast tool import of complete tool lists
- Efficient data maintenance in the central tool database with direct access to TDM tool data from the Vericut environment
- Common data base for NC programming, simulation, presetting and machining
- Non-redundant tool data
- High process reliability due to direct import from central tool data source
- Collision-free NC programs as a result of highly realistic machine simulations



Integration TDM - VERICUT CAD-Features

The extension: CAD-features

TDM 3D-Solid Converter for VERICUT provides VERICUT users with convenient functions for creation of Vericut-conform DXF and STEP data. Based on the TDM 3D tool assembly graphics, the integrated software tools for automatic conversion and for manual editing of 3D tool graphics offer substantial time savings and quality improvements in daily work.

TDM 3D-Solid Converter for VERICUT

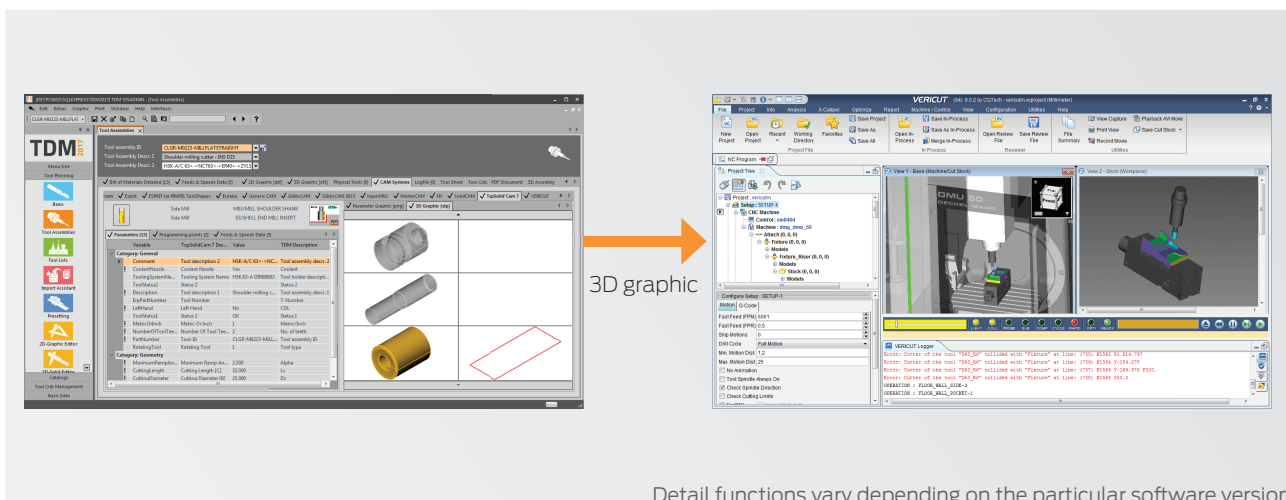
The TDM 3D-Solid Converter makes it possible to derive tool geometries according to Vericut requirements from TDM 3D tool graphics. The DXF or STEP data are then available for usage in Vericut via the Tool Manager plugin. This provides Vericut users with efficient collision control as a result of highly realistic NC program simulations in the virtual machine room.

TDM 2D-Graphic Editor and TDM 3D-Solid Editor

The functions of the TDM 2D-Graphic Editor and the TDM 3D-Solid Editor make it easy to adapt and correct 2D graphics and 3D solids directly in TDM. Correction of layers, drawings, dimensions, axis alignments and zero points enables fast and targeted processing of existing drawings and models. As a result, these conform to the TDM standard for later use by the TDM 3D-Solid Converter and in VERICUT.

Advantages of the CAD-features:

- Easy creation of the TDM 3D data and conversion into Vericut-specific format
- Efficient data maintenance, any previously stored 3D data in TDM can be made available for all CAM and simulation systems at the click of a button
- Collision-free NC programs as a result of highly realistic machine simulations



Detail functions vary depending on the particular software version